

# Report: Serene Lakes East Area Flooding Analysis

Prepared by George Lamson

3/9/16

On January 31<sup>st</sup>, 2016 there was a flooding incident in the eastern portion of the Serene Lakes community as a result of a heavy rain storm on a heavy base of snow. There was wide spread flooding of houses in the area with significant financial damage to cabin interiors. This report is an analysis of the causes that led to the flooding and offers possible solutions to the problem to prevent future flooding.





# Serene Lakes Watershed – East Side Natural Drainage

6/2013

N

Natural drainage  
was through 18  
acres of subdivision

East area  
Watershed

662 acres  
55 acre-ft/inch rain

Serene Lakes

Drainage  
Gradient

Drainage  
Gradient

Drainage  
Gradient

Drainage  
Gradient

Drainage  
Gradient

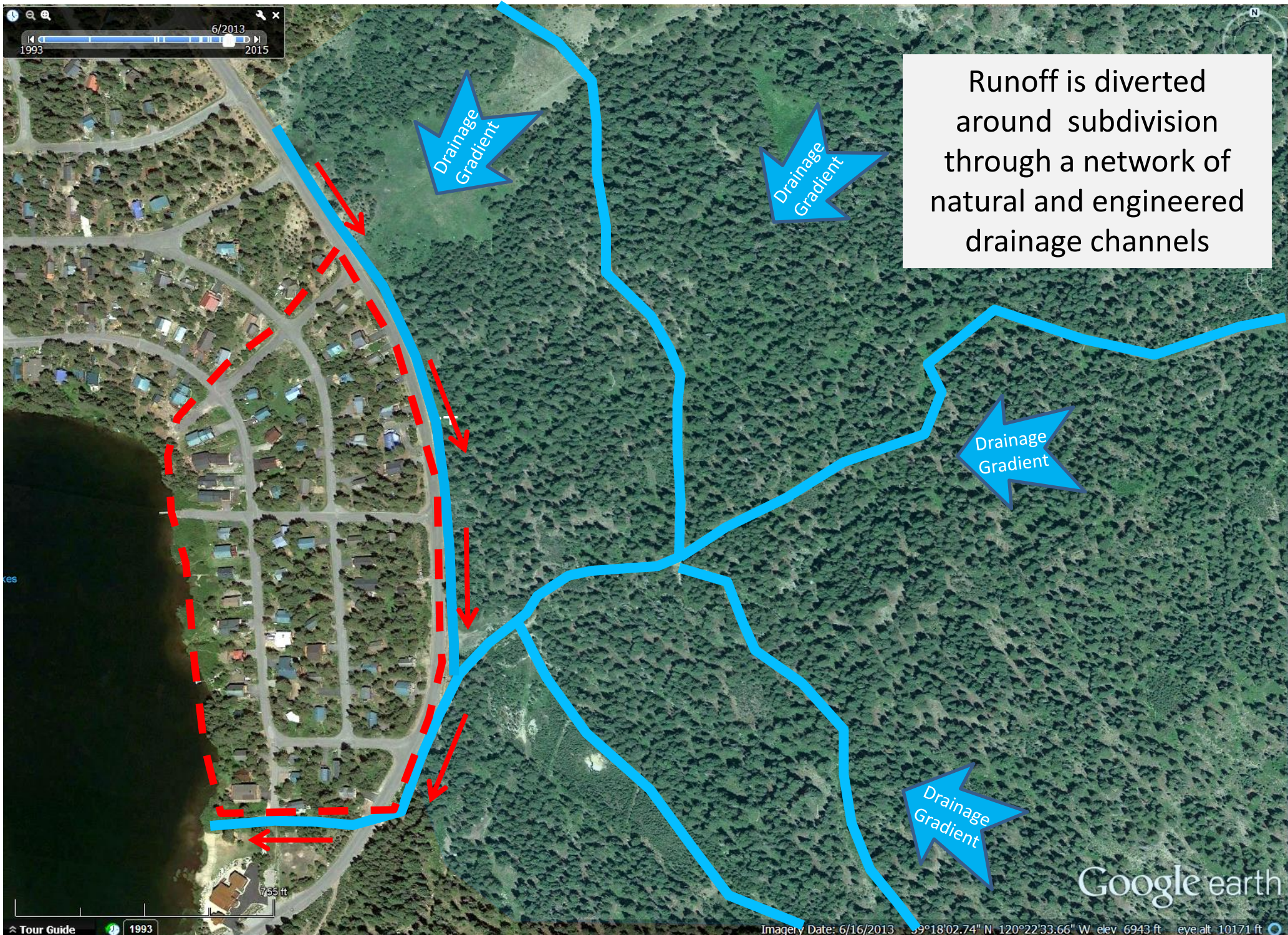
Drainage  
Gradient

Drainage  
Gradient

Google earth

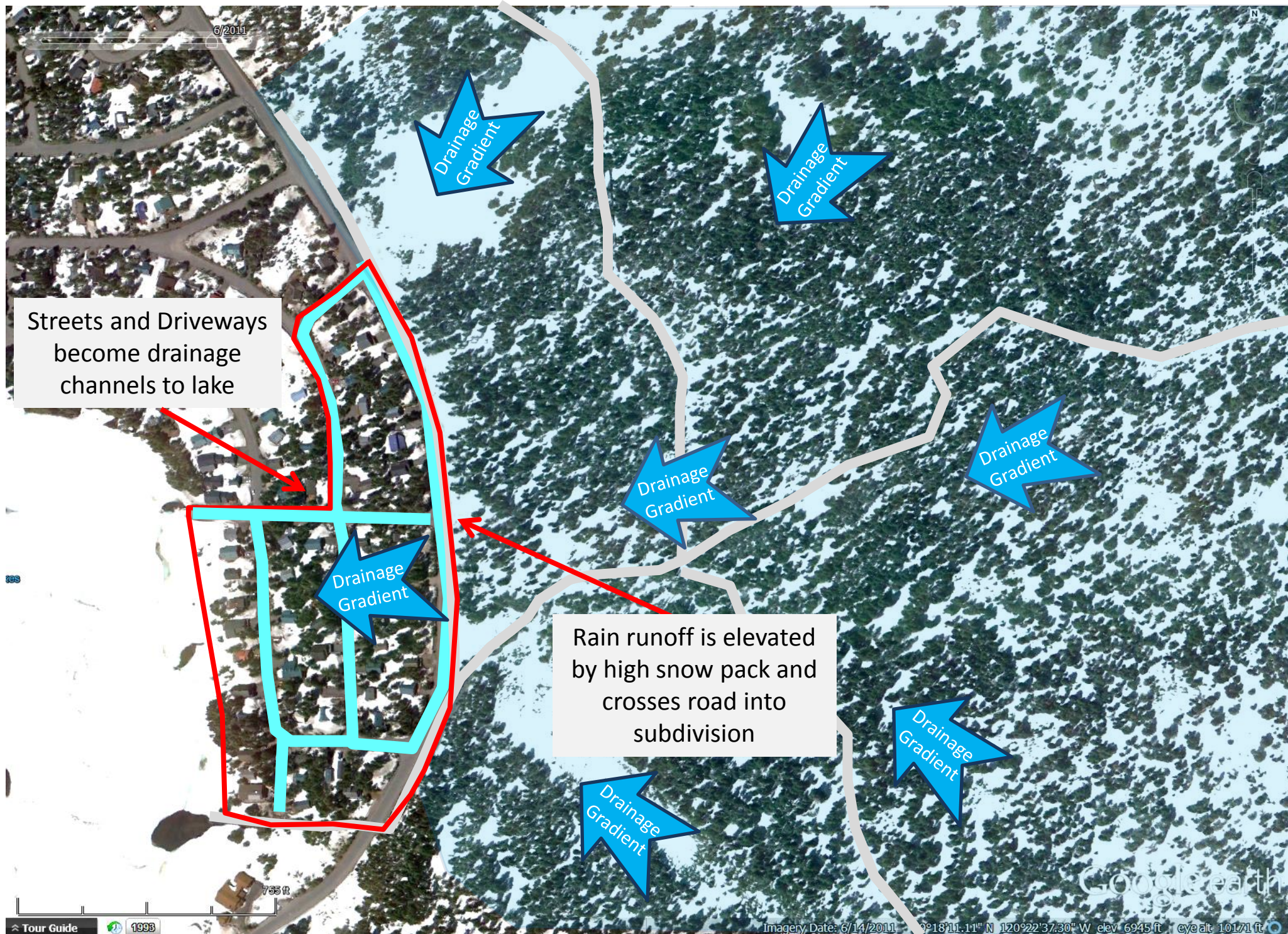


# Diversion of Watershed Runoff



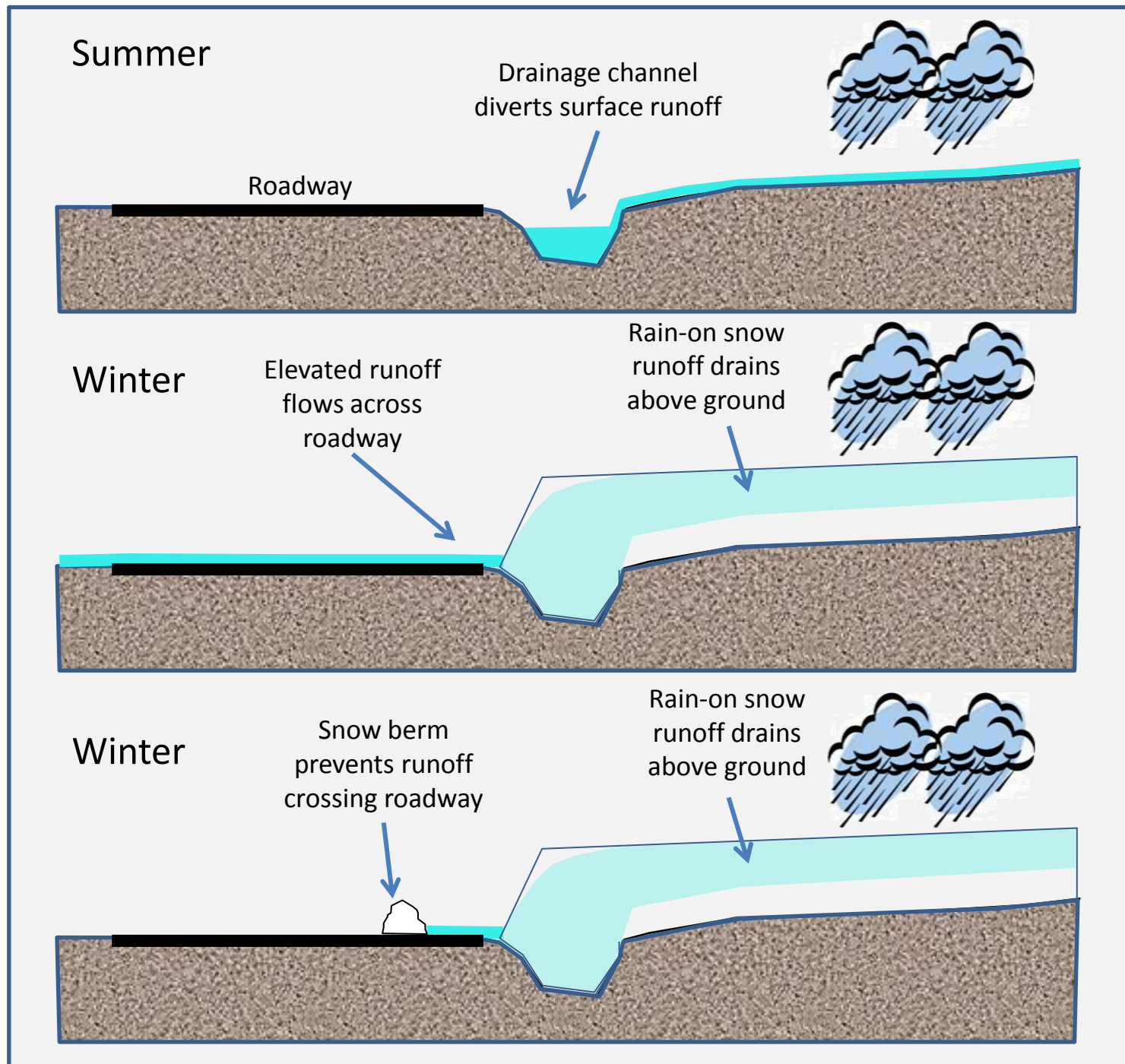


# Natural Drainage is Restored When Snow Fills Drainage Network





## Diversion Drainage Neutralized by Heavy Snow

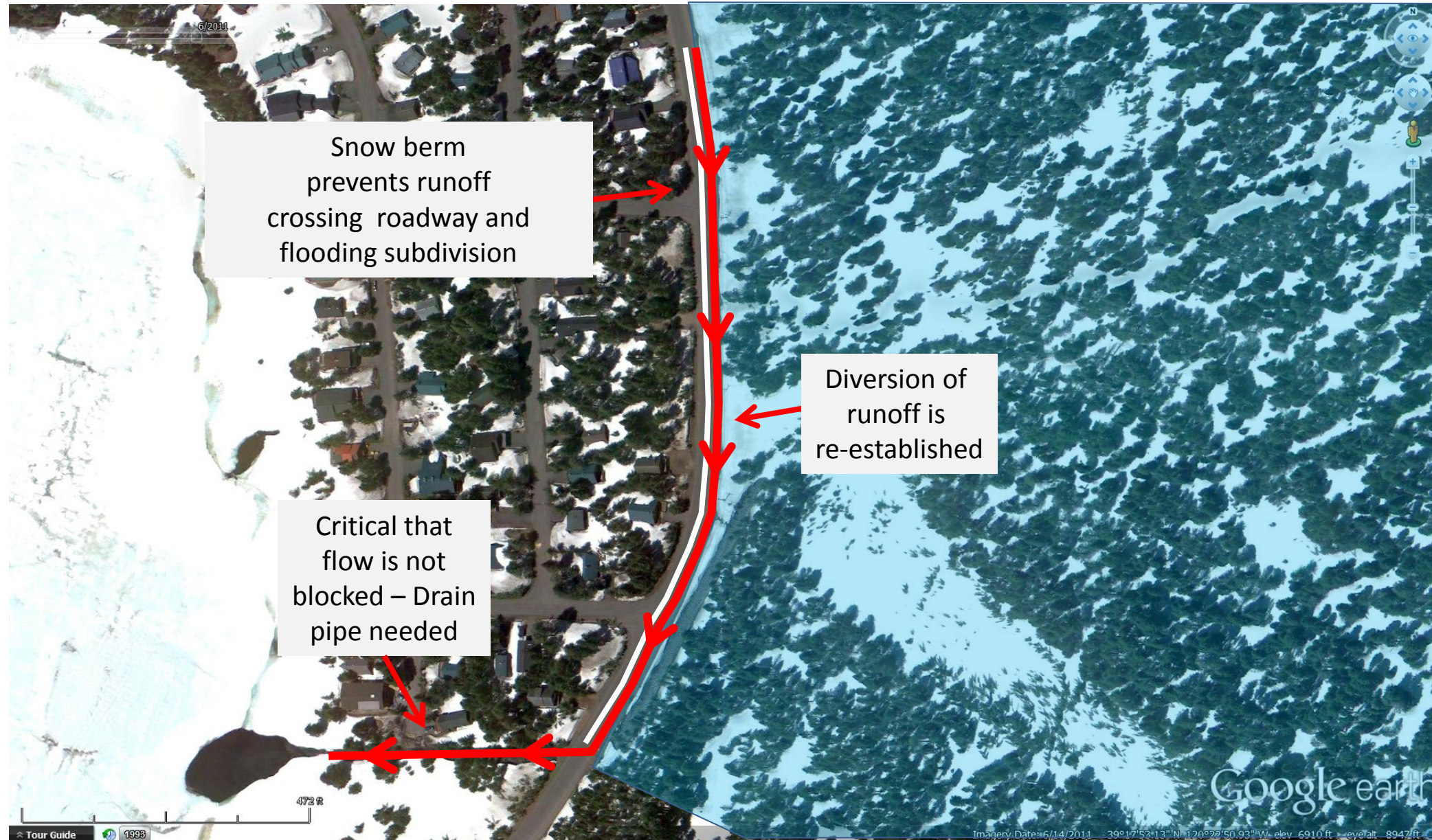


## Soda Springs Rd Drainage Conditions – Summer/Winter



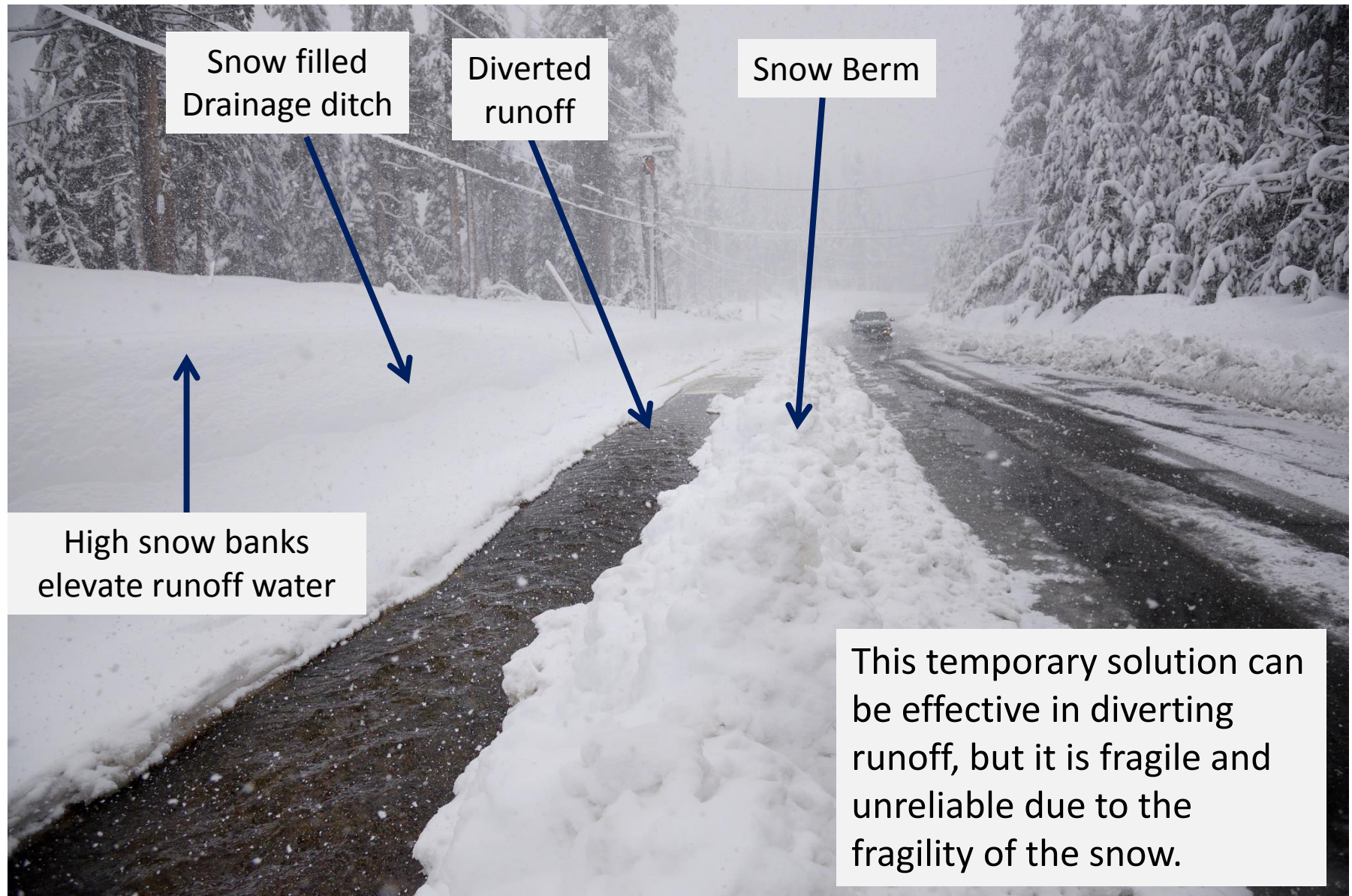


## Snow Berm Re-establishes Drainage Diversion





## Snow Berm Diverts Runoff Water from Road and Subdivision





# Possible Long Term Winter Flooding Solutions

